

Wet Floor Resin 940

Construction Chemicals > Floor Coverings > Resin Based Coating



It is a special resin used to protect the colors of natural stone, walls, floors, and other hard, porous materials, ensuring that the surface maintains a continuously wet appearance and revitalizes the colors of the coated surface. It has water-repellent properties.

■ Fields of Application

- Surfaces and Walls, Coatings, Facades, Countertops, Verandas
- Driveways and Garages, Kitchens
- Entertainment Areas
- Can be used on a variety of surfaces including natural stone, clay, fired ceramic tiles, brick, concrete, terrazzo, and more. Suitable for both indoor and outdoor use

■ Advantages

- It provides a vibrant and wet appearance to the surfaces it is applied to
- It protects against staining with its superior oil and water repellency
- It is long-lasting and easy to apply. In the future, it can be reapplied over the existing surface without peeling it off
- It does not cause peeling, yellowing, cracking, blistering, or breaking
- Water vapor penetrates freely, preventing moisture accumulation within the material. It does not attract dust

1 Surface Preparation

The product should always be tested on a small area first, and a 24-hour curing period should be observed to check the results. Any substances that could prevent adhesion, such as dust, dirt, and oil, must be removed from the surface, and there should be no loose or movable particles. Apply the product evenly over the surface using a paint roller, clean brush, or sponge. Allow the product to penetrate the surface for at least 30 minutes, then remove excess residues with a clean, dry cloth. Allow the product to cure for at least 1 hour, and an additional coat can be applied if desired. Avoid contact with water for at least 8 hours after application. Organic solvents such as synthetic thinner can be used to clean the equipment.

2 Consumption

70-150 g/m² (depending on the surface condition)

3 Storage Conditions and Shelf Life

- In unopened packaging, 1 year
- The product should be protected from direct sunlight and stored at 5-35°C
- The container should be tightly sealed after use. The product should not be mixed with other chemicals

4 Packaging

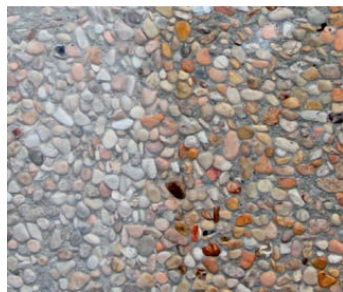
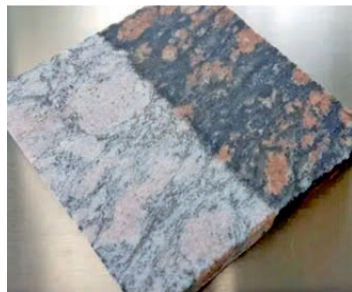
1 / 3 kg Plastic drum

5 Precautions

Flammable liquid. Causes eye irritation. Read the label before use. Keep away from heat, hot surfaces, sparks, open flames, and other ignition sources. Do not smoke during application. Use protective gloves, clothing, goggles, and a mask. Store in places out of reach of children. In case of fire, use alcohol-resistant foam to extinguish.

6 Safety and Health Warnings

Protective goggles, clothing, and gloves should be worn. Avoid contact with skin, eyes, and clothing. If the product gets into the eyes, rinse carefully with plenty of water for several minutes. If contact lenses are present and easily removable, they should be removed, and rinsing should continue. If eye irritation persists, seek medical attention. Prevent the product from spreading into the environment. Do not eat or drink during use, and do not smoke. To minimize spills, all packaging and containers should be carefully sealed. Containers should be kept tightly sealed when not in use. Keep away from heat, sparks, open flames, and hot surfaces. Do not handle broken packages without protective equipment. Empty containers should not be reused. If clothing becomes contaminated, remove it immediately and wash before reuse. The product should be stored in clearly labeled containers. Keep out of reach of children. Keep away from food, drink, and animal feed. Keep away from oxidizing agents, heat, and flames. Store only in its original container. Containers should be kept tightly closed, upright, in a cool, well-ventilated area, and protected from damage.



TECHNICAL DATAS

Density	1,03 kg/lit
Viscosity	17 mPas
Flash Point	40 °C
Flammability	> 110 °C
Boiling Point	180 °C
Adhesion Temperature	300 °C
Ignition Point	None
Appearance	Matte
PH	6

7 Important

Avoid direct contact with skin. In case of contact, rinse with clean water. Avoid contact with eyes. If contact with eyes occurs, wash thoroughly with clean water for 15 minutes. If swallowed, drink plenty of water and seek medical attention immediately.

8 Note

The information provided in this product data sheet is given in good faith based on current knowledge and experience. If you are not satisfied after conducting a surface test on a small area, please contact our technical service department immediately. The information on this page pertains only to the specified material and may not be applicable to combinations with other materials or in different processes. This information is accurate as of the specified date to the best of the company's knowledge. Since usage conditions are beyond our control, all recommendations are made without guarantee or warranty as to accuracy, reliability, or completeness. It is the user's responsibility to ensure the suitability and application of this information for their own use. The manufacturer's responsibility is limited to the replacement of products proven to be defective.